

Health Monitor GMON since 2006

„INDICATE Health Risks – RATE professionally – REACT prophylactically“

New! July 2012: GMON Pro Version 3
January 2013: GMON Standard Version 3

Keep the established ...

GMON presents all former principals and functionalities in a new design –
Of course compatible regarding the already compiled data:

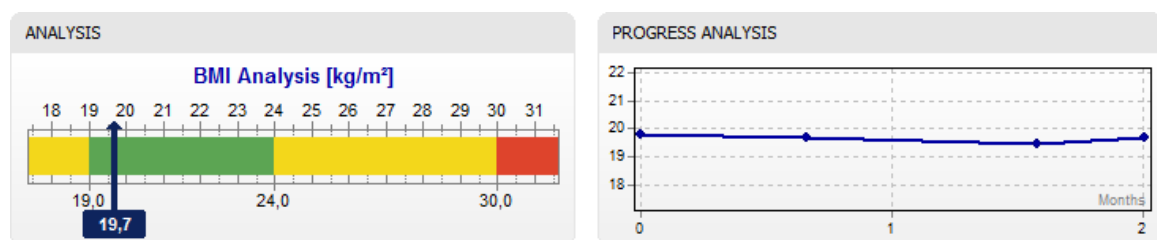
Simply backup the database of the Version 2 in Administration/Tools/Backup Database in a .gbak file and restore in the Version 3 Administration/Tools/Restore Database
.gmon files can be restored in the same way so it is easy to proceed seamlessly with further monitoring.

... and extend practically:

(1) Actual reading + trend graph on one glance

For each assessed parameter a trend graph of the previous readings is displayed beside the rating. Without further clicks a trend is visible (Graph visible and ready to print under

→ Value Progress)



(2) Rating intuitively traceable

The Status Quo display in the color graph suggests already: Green is not same as green. The position within the green range gives a differentiated indication to potentials or deficits. However the tendency is more important than the mathematical detail – the trend graph orientates on the color range and simplifies the interpretation of the rating with traffic light or Smiley symbols.

(3) Help data in PDF-Format (German and English only)

→ Help directs to a help file in PDF format. You can access it directly from GMON. It is printable so you can also use it outside GMON and complement it with your own info and notes.

(4) Fonts unlimited

GMON actually is available in 18 languages – and each character set can be realized. The single user mostly uses their (Mother-) Language but profits from the Worldwide use of and user experience with GMON which results into feedback and into the permanent development of this product.

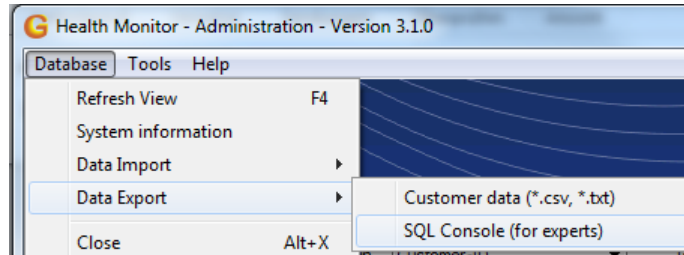
Health Monitor GMON since 2006

„INDICATE Health Risks – RATE professionally – REACT prophylactically“

New! July 2012: GMON Pro Version 3
January 2013: GMON Standard Version 3

(5) Database queries for SQL

A direct SQL database query was added to the Administration module

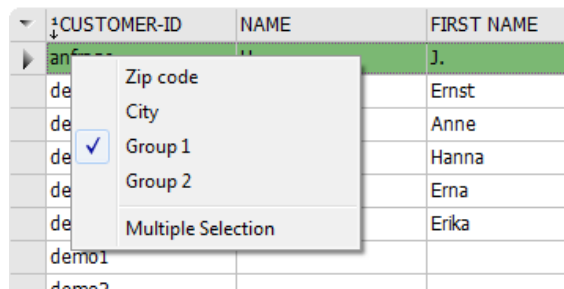


If you know a bit about databases then it is easy to extract whatever data you wish in xls, txt or csv format. Some sample queries show the essential principles of SQL use with which anybody is able to use this feature in a professional way. Even statistics can be created.

	SEX	COUNT	AVG Age [years]	AVG Weight [kg]	MIN Weight	MAX Weight	AVG BMI [kg/m ²]	AVG Fat%
▶	F	25	31,40	60,46	52,30	72,90	22,77	27,43
	M	8	51,63	87,21	82,00	89,80	26,48	25,78

(6) Multiple selection

(7)



With pushing the keys <Shift> und <Strg> you can select several lines in the clients list. This simplifies the features Export and Delete for a bigger number of clients.

From Version 2 to Version 3

Version 3 as an Upgrade product to Version 2 is a new Software. To upgrade with all yet used modules you need to send an inquiry to M&S including your SNR and LIC. You will receive an individual offer. A CD will be shipped against payment in advance (payment via Paypal) with new SNR and LIC – Your Version 2 remains valid.