

Health Monitor GMON

„INDICATE Health Risks – RATE professionally – REACT prophylactically“

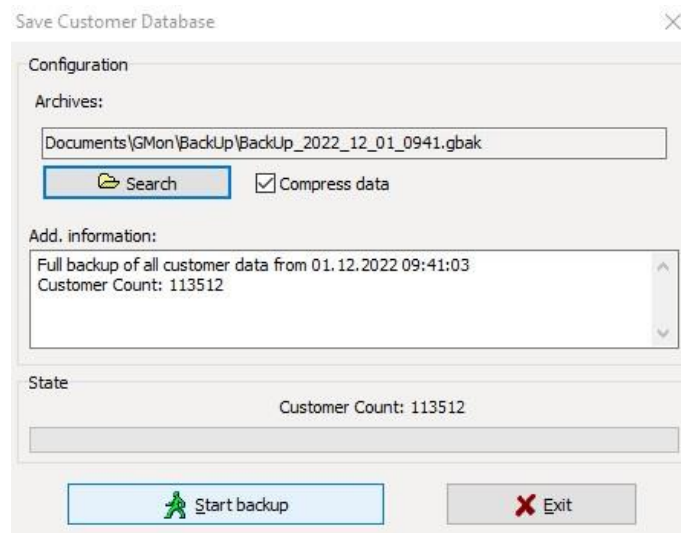
Data Backup and Data Recovery

Backup of the database

The GMON Pro uses a Firebird database to store all the client data. To save the current database for reinstallation of the software or archiving, click > **Tools > Backup Database**.

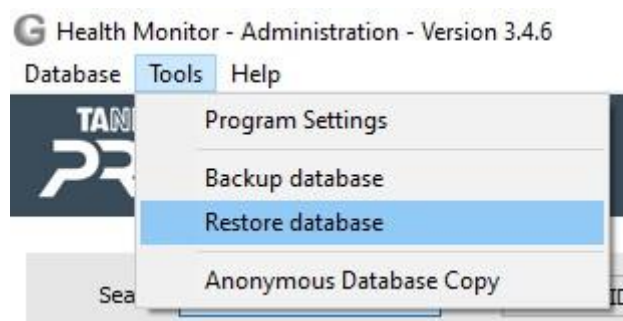


The save directory can then be chosen and the information about the data to be saved can be checked. Clicking on **Start Backup** completes the process.



Restore a database

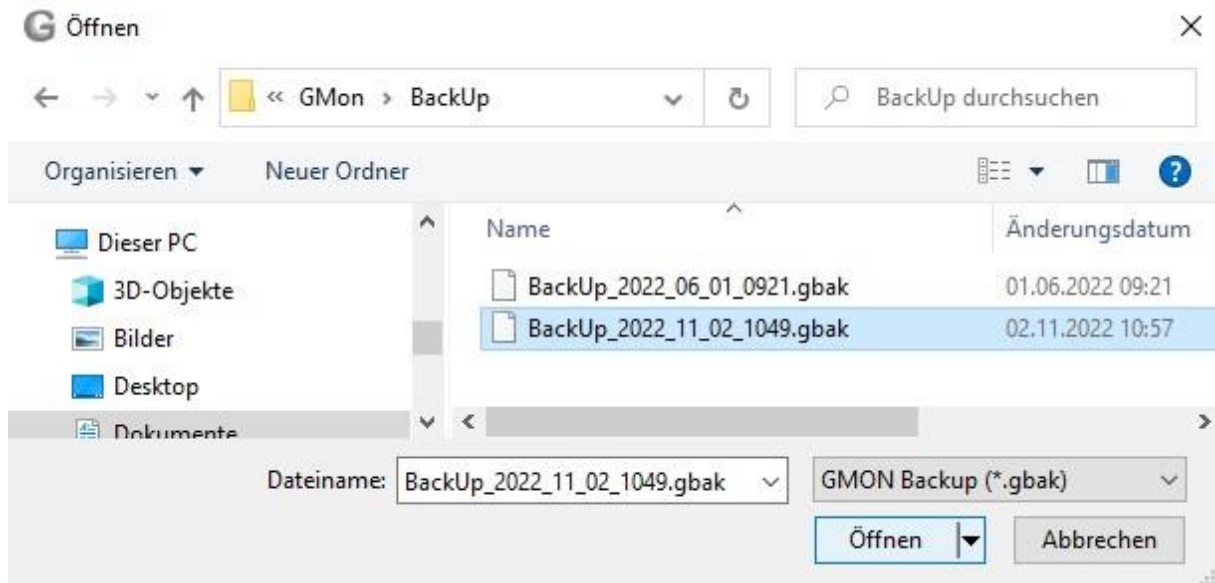
Similarly, a previously saved database on your new or old system will be imported into GMON. The process is started by clicking on > **Extras > Restore database** and then selecting the file to be restored in the file browser.



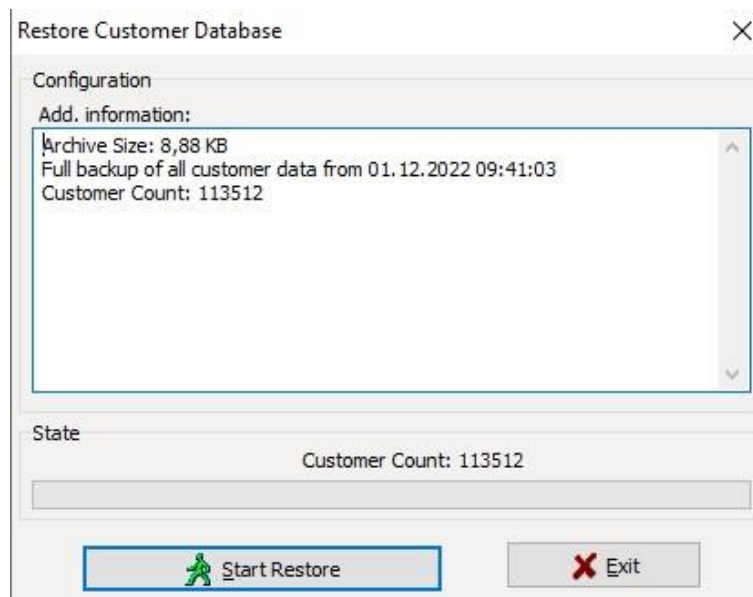
Health Monitor GMON

„INDICATE Health Risks – RATE professionally – REACT prophylactically“

Data Backup and Data Recovery



Afterwards, all information of the database can be viewed and checked again. A click on **Start Restore** completes the process.



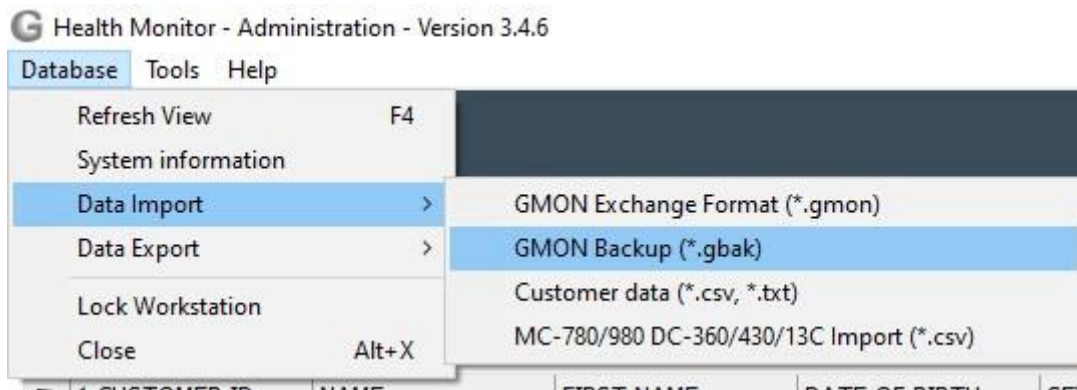
Import of a saved database

If you want to add a previously backed up database to your database, there is the function > **Database > Data Import > GMON Backup (*.gbak)**.

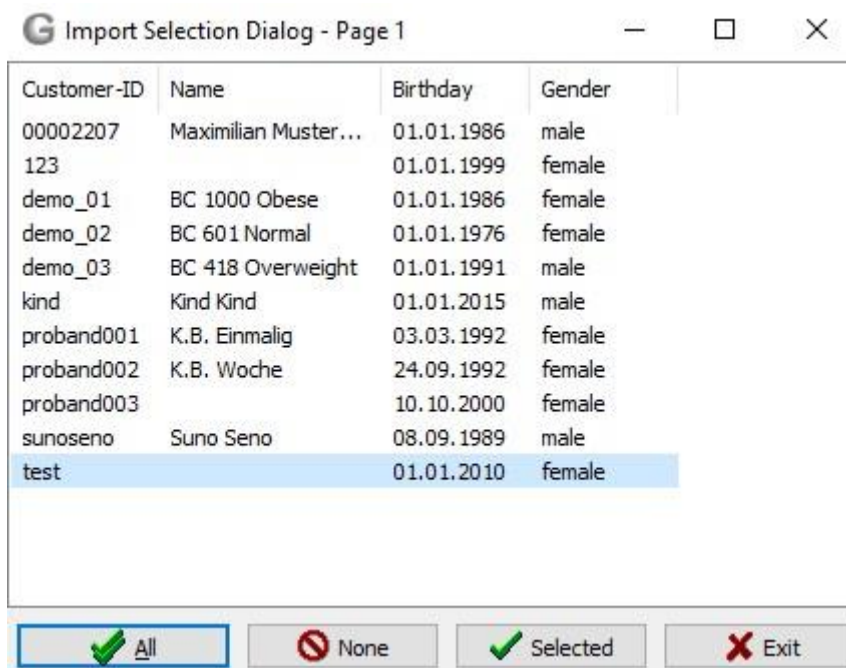
Health Monitor GMON

„INDICATE Health Risks – RATE professionally – REACT prophylactically“

Data Backup and Data Recovery



After selecting the corresponding file in the file browser, a list of all clients to be imported follows. You can select individual clients with **Ctrl + left click** and import them with **Selected** or add the entire database directly with **All**.



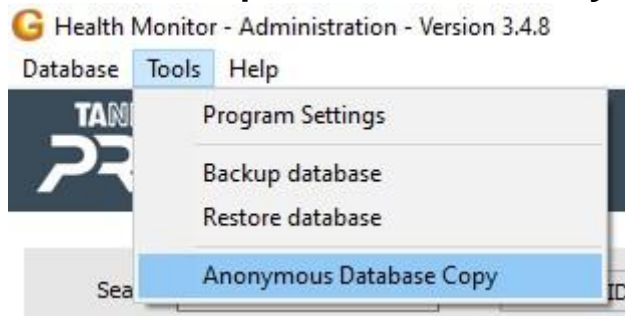
Anonymous copy of the database

An anonymous copy of the database ensures data protection requirements. Only the data that is absolutely necessary for the evaluation of the measurement data is exported, customer ID, birthday, gender, which means that all other information is not exported. When importing, the three pieces of information are then sufficient to correctly assign the data. The anonymous copy is created analogously to the conventional export. The data not exported with an anonymous copy of the database cannot be restored during the data import!

Health Monitor GMON

„INDICATE Health Risks – RATE professionally – REACT prophylactically“

Data Backup and Data Recovery



[<top>](#)